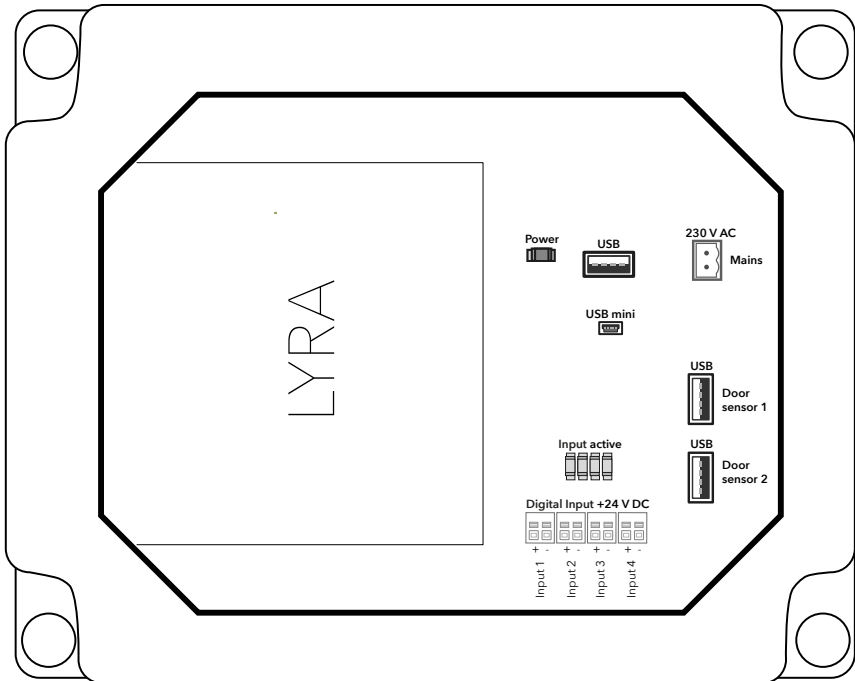


# LYRA adapter IP65 manual



---

# Technical data

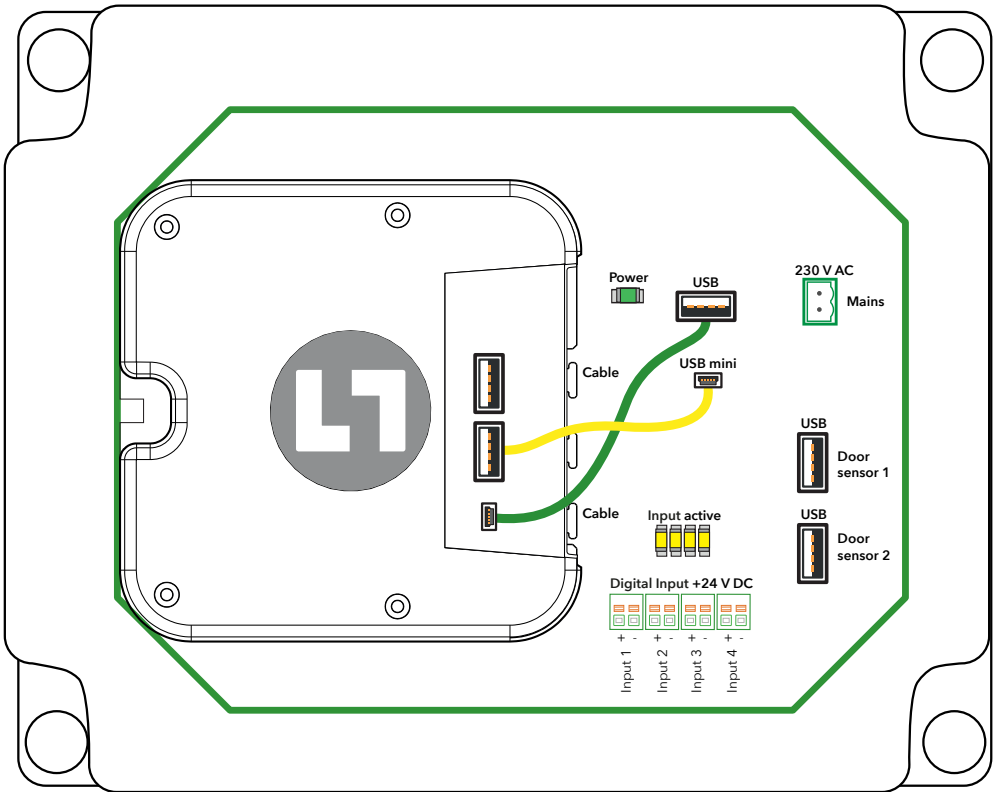
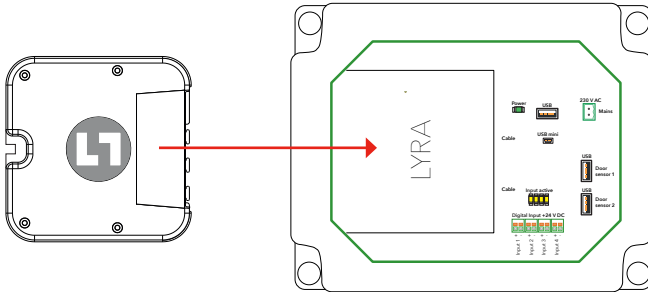
## Boxed unit

Size (HxWxD):	107 x 191 x 240 mm
Weight:	1450 g
IP code:	IP65

## Adapter board

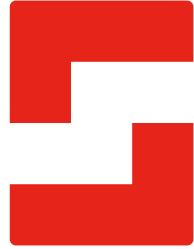
Power supply:	Screw terminal: 230 V AC
Inputs:	Screw terminal: 4x 24 V DC, galvanically isolated
USB:	2x USB-A: female connectors for door sensors

# Connect LYRA to adapter board



Connect LYRA to the adapter board using two cables:

- one cable from LYRA to the USB connection on the adapter board,
- another cable from LYRA to the USB mini connection on the adapter board.



### **SafeLine Headquarters**

Antennvägen 10 · 135 48 Tyresö · Sweden  
Tel.: +46 (0)8 447 79 32 · [info@safeline.se](mailto:info@safeline.se)  
Support: +46 (0)8 448 73 90

### **SafeLine Denmark**

Vallensbækvej 20A, 2. th · 2605 Brøndby · Denmark  
Tel.: +45 44 91 32 72 · [info-dk@safeline.se](mailto:info-dk@safeline.se)

### **SafeLine Norway**

Solbråveien 49 · 1383 Asker · Norway  
Tel.: +47 94 14 14 49 · [post@safeline.no](mailto:post@safeline.no)

### **SafeLine Europe**

Industrieterrein 1-8 · 3290 Diest · Belgium  
Tel.: +32 (0)13 664 662 · [info@safeline.eu](mailto:info@safeline.eu)  
Support: +32 (0)4 85 89 08 95

### **SafeLine Deutschland GmbH**

Kurzgewannstraße 3 · D-68526 Ladenburg · Germany  
Tel./Support: +49 (0)6203 840 60 03 · [sld@safeline.eu](mailto:sld@safeline.eu)

### **SafeLine Group UK**

Unit 47 · Acorn Industrial Park · Crayford ·  
Kent · DA1 4AL · United Kingdom  
Tel.: +44 (0) 1322 52 13 96 · [info@safeline-group.uk](mailto:info@safeline-group.uk)

SafeLine is a registered trademark of SafeLine Sweden AB. All other trademarks, service marks, registered trademarks, or registered service marks are the property of their respective owners.